

As technology and products are constantly updated, content and technology are subject to change without prior notice. Without the written permission of Huida Medical Device Co., Ltd., the pictures and format in the manual are not allowed to be reproduced, disseminated, use or modify the manual.

Huidamed®

CHANGZHOU HUIDA MEDICAL INSTRUMENT CO.,LTD

Add: No.1 Shijiapeng Rd, Jincheng Twon Industrial Park, Jintan District, Changzhou, Jiangsu 213200 China.

Tel: +86 519 82857858 Fax: +86 519 82857868

Email: Info@huidamed.com

www.huidamed.com



HUIDAMED, all rights reserved - version 2024.1.0AE Subject to Change



SURGICAL

Company Profile

Established in 1999 and located in Changzhou, HUIDAMED, as a professional manufacturer of neurosurgery equipment and solutions provider, focuses on the development and marketing of cranial stabilization and brain retractor system, surgery power system and related accessories. With the certificate of EN ISO 13485:2003, CE, high quality and good service is company's foundation.

For 23 years, HUIDAMED has established its place in the demanding neurosurgery market in China and abroad through strict Chinese and international standards. The sales network covers over 50 countries worldwide and is well-known by partners for its high quality and good service.

Concentrate On Neurosurgery 23 Years



**HD-MZI
SURGICAL
FOR NEU**

Multifunctional Console

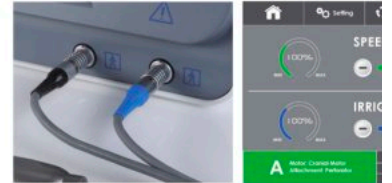


HC1702

The 7-inch color touch screen with a user-friendly interface. 2 different motors, easy to switch. Flexible setting on language, etc.

Cable safety socket, prevent accidental fall off

High lumen touch screen operation with gloves



Irrigation Flow: ≥ 10 ml/min

Function: Overload Protection

Anti Surge*

Torque Compensation

Brake Stop**

Multifunction Use

Support Personal Setting

Apply to Neurosurgery, ENT, Spinal, Joint and Small Bone

* Protect the system from the current shock of high frequency electrotom
** Motor stopped within 0.35s after quick release foot pedal

The demands and feedback from surgeons are essential to make the system reliable, stable, and easy to use & maintain. For application, low failure rate and lifetime usage, we are our top priority.

Inspired by listening to your needs, HC1702 is the choice of a reliable power system.

This system could be used in neurosurgery, spinal, maxillofacial, and orthopedic surgery. It could meet the personalized operation setting, perfectly reliable and efficient.



Console

HC1701



Size: L31cm x W25cm x H12cm
Weight: 2.2 Kg

HC1703



Size: L31cm x W25cm x H12cm
Weight: 2.2 Kg

Cranial Motor



HC1801

- Using Swiss brushless motor, high torque, low noise, low temperature-rise, autoclavable
- ISO-E connector
- Self-lock hook design makes the safe hold of handpiece
- High-performance shielded cables, prevent mutual interference with other sensitive equipment in the OT-room
- Stronger cable connection and leakproofness, able to withstand the daily work of OT-room and supply room

Speed: 0-40,000 RPM
 Rated Power: 170W
 Torque: >25mNm
 Length of Cable: 3m
 Weight: 210g

Available Console
HC1701
HC1702

Cranial Motor Accessories

HC1910



HC1920



High Speed Motor



HC1802

High speed motor

Available Console
 HC1701
 HC1702
 HC1703

- Using Swiss brushless
- ISO-E connector
- Self-lock hook design
- High-performance shielded
- Stronger cable connection

60000RPM Speed: 0-60,000 RPM
 Rated Power: 60W
 Torque: > 15mNm
 Length of Cable: 3m
 Weight: 130g



HC1803

High speed motor

Available Console
 HC1702

- Swiss brushless motor
- ISO-E connector
- Self-lock hook design
- High-performance shielded
- Stronger cable connection

80000RPM Speed: 0-80,000 RPM
 Rated Power: 80W
 Torque: > 15mNm
 Length of Cable: 3m
 Weight: 140g



High Speed Motor Accessories

Micro Handpiece

Designed specifically for the most challenging microsurgery needs, help the operation in small spaces like skull base. The slim top can reduce interference with other surgical equipment in small operating spaces. Durable, reliable, with sound vibration and noise control



Micro Drill Handpiece Straight

Available Console
HC1701
HC1702
HC1703

HC1935-88

Working L: 88mm
OD: ϕ 5mm
ID: 2mm

HC1935-108

Working L: 108mm
OD: ϕ 5mm
ID: 2mm

HC1935-128

Working L: 128mm
OD: ϕ 5mm
ID: 2mm



Micro Drill Handpiece Angled

Available Console
HC1701
HC1702
HC1703

HC1945-88

Working L: 88mm
OD: ϕ 5mm
ID: 2mm

HC1945-108

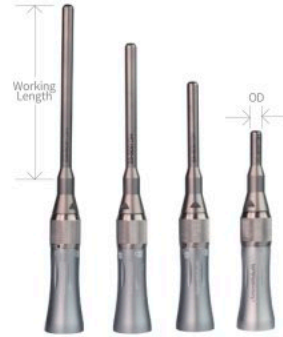
Working L: 108mm
OD: ϕ 5mm
ID: 2mm

HC1945-128

Working L: 128mm
OD: ϕ 5mm
ID: 2mm

Standard Handpiece

The standard handpiece could meet



Stand Straight

HC19

Working L:
OD: ϕ 6m
ID: 2.35m

HC19

Working L:
OD: ϕ 6m
ID: 2.35m



Stand Angled

HC19

Working L:
OD: ϕ 6m
ID: 2.35m

HC19

Working L:
OD: ϕ 6m
ID: 2.35m

Endoscopic Drill Handpiece

Available Console
HC1701
HC1702
HC1703

HC1933-300

Speed: 0~20,000 RPM
Length: 300mm
OD: 3.5mm
Straight



HC1943-300

Speed: 0~20,000 RPM
Length: 300mm
OD: 3.5mm
Angled



Available Console
HC1702

Oscillating Saw

HC1950

Speed: 0~20,000 TPM



Available Console
HC1702

Reciprocating Saw

HC1951

Speed: 0~20,000 TPM



Shaver
HC1975
Speed: 0~
Rated Pow
Without C

ENT Shaver Motor

HC1975

Speed: 0~9,000 RPM / 0~6,000 RPM
Rated Power: 80W

Available
HC

Consumables

Select suitable consumables according to the surgery
 HUIDAMED provides you with diversified consumables support. In addition to conventional models, particular specifications can also be customized according to clinical demands.

Diamond Ball (Fine)



Size Dia	20mm	45mm	65mm	85mm	88mm	108mm	128mm	300mm
Φ1mm	HC21-20-1	HC21-45-1	HC21-65-1	HC21-85-1	-	-	-	-
Φ2mm	HC21-20-2	HC21-45-2	HC21-65-2	HC21-85-2	HC21-88-2	HC21-108-2	HC21-128-2	-
Φ3mm	HC21-20-3	HC21-45-3	HC21-65-3	HC21-85-3	HC21-88-3	HC21-108-3	HC21-128-3	HC21-300-3
Φ4mm	HC21-20-4	HC21-45-4	HC21-65-4	HC21-85-4	HC21-88-4	HC21-108-4	HC21-128-4	HC21-300-4
Φ5mm	HC21-20-5	HC21-45-5	HC21-65-5	HC21-85-5	-	-	-	-
Φ6mm	HC21-20-6	HC21-45-6	HC21-65-6	HC21-85-6	-	-	-	-

Diamond Ball (Medium)



Size Dia	20mm	45mm	65mm	85mm	88mm	108mm	128mm	300mm
Φ2mm	HC21-20-2M	HC21-45-2M	HC21-65-2M	HC21-85-2M	-	-	-	-
Φ3mm	HC21-20-3M	HC21-45-3M	HC21-65-3M	HC21-85-3M	-	-	HC21-300-3M	-
Φ4mm	HC21-20-4M	HC21-45-4M	HC21-65-4M	HC21-85-4M	-	-	HC21-300-4M	-
Φ5mm	HC21-20-5M	HC21-45-5M	HC21-65-5M	HC21-85-5M	-	-	-	-
Φ6mm	HC21-20-6M	HC21-45-6M	HC21-65-6M	HC21-85-6M	-	-	-	-

Diamond Ball (Coarse)



Size Dia	20mm	45mm	65mm	85mm	88mm	108mm	128mm	300mm
Φ2mm	HC21-20-2D	HC21-45-2D	HC21-65-2D	HC21-85-2D	-	-	-	-
Φ3mm	HC21-20-3D	HC21-45-3D	HC21-65-3D	HC21-85-3D	-	-	-	-
Φ4mm	HC21-20-4D	HC21-45-4D	HC21-65-4D	HC21-85-4D	-	-	-	-
Φ5mm	HC21-20-5D	HC21-45-5D	HC21-65-5D	HC21-85-5D	-	-	-	-
Φ6mm	HC21-20-6D	HC21-45-6D	HC21-65-6D	HC21-85-6D	-	-	-	-

Cutting Ball

Size Dia	20mm	45mm	65mm	85mm
Φ1mm	HC22-20-1	HC22-45-1	HC22-65-1	HC22-85-1
Φ2mm	HC22-20-2	HC22-45-2	HC22-65-2	HC22-85-2
Φ3mm	HC22-20-3	HC22-45-3	HC22-65-3	HC22-85-3
Φ4mm	HC22-20-4	HC22-45-4	HC22-65-4	HC22-85-4
Φ5mm	HC22-20-5	HC22-45-5	HC22-65-5	HC22-85-5
Φ6mm	HC22-20-6	HC22-45-6	HC22-65-6	HC22-85-6

Diamond Matchhead

Size Dia	20mm	45mm	65mm	85mm
Φ3mm	HC21M-20-3	HC21M-45-3	HC21M-65-3	HC21M-85-3
Φ4mm	HC21M-20-4	HC21M-45-4	HC21M-65-4	HC21M-85-4

Cutting Matchhead

Size Dia	20mm	45mm	65mm	85mm
Φ3mm	HC22M-20-3	HC22M-45-3	HC22M-65-3	HC22M-85-3
Φ4mm	HC22M-20-4	HC22M-45-4	HC22M-65-4	HC22M-85-4

Oscillating Saw Blade

Size	20°*Φ0.4mm	22°*Φ0.4mm	24°*Φ0.4mm	28°*Φ0.4mm
Code	HC25-4	HC25-6	HC25-9	HC25-10

Straight Shaver Cutter

HC50-1
 OD: 4.2mm
 Length: 120mm

Angled Shaver Cutter

HC60-1
 OD: 4.2mm
 Length: 110mm

Craniotome

Autoclavable
Material: Stainless Steel



HC24
Standard

HC24R
Twist

Twist Drill Bit

HC20-11
Dia: 1.1mm

HC20-15
Dia: 1.5mm

HC20-20
Dia: 2.0mm

Perforator

Auto-Stop, Autoclavable, Material: Stainless Steel



HC23-7
Φ7mm (7/11)

HC23-9
Φ9mm (9/13)

HC23-11
Φ11mm (11/14)



HCI23-7
Φ7mm (7/11)

HCI23-9
Φ9mm (9/13)

HCI23-11
Φ11mm (11/14)

Hudson
Fitting

Dura Guard



HC27-1
Rotatable

HC27-2
Fixed

Irrigation Nozzle



HC3035
For Standard Handpiece



HC3036
For Micro Handpiece



HC3037
For Reciprocating Saw

Irrigation Tube



HC3031
Length: 290mm
Disposable

Reciprocating Saw Blade



HC26
20° 5*0.5mm

Disposable Products

Disposable Diamond Ball

Dia	Size	20mm	45mm	65mm	85mm
Φ1mm		SHC21-20-1	SHC21-45-1	SHC21-65-1	SHC21-85-1
Φ2mm		SHC21-20-2	SHC21-45-2	SHC21-65-2	SHC21-85-2
Φ3mm		SHC21-20-3	SHC21-45-3	SHC21-65-3	SHC21-85-3
Φ4mm		SHC21-20-4	SHC21-45-4	SHC21-65-4	SHC21-85-4
Φ5mm		SHC21-20-5	SHC21-45-5	SHC21-65-5	SHC21-85-5
Φ6mm		SHC21-20-6	SHC21-45-6	SHC21-65-6	SHC21-85-6

Disposable Cutting Ball

Dia	Size	20mm	45mm	65mm	85mm
Φ1mm		SHC22-20-1	SHC22-45-1	SHC22-65-1	SHC22-85-1
Φ2mm		SHC22-20-2	SHC22-45-2	SHC22-65-2	SHC22-85-2
Φ3mm		SHC22-20-3	SHC22-45-3	SHC22-65-3	SHC22-85-3
Φ4mm		SHC22-20-4	SHC22-45-4	SHC22-65-4	SHC22-85-4
Φ5mm		SHC22-20-5	SHC22-45-5	SHC22-65-5	SHC22-85-5
Φ6mm		SHC22-20-6	SHC22-45-6	SHC22-65-6	SHC22-85-6

Disposable Craniotome



Disposable Perforator

Auto-stop



SHC23-5
Φ5mm (5/7)

SHC23-7
Φ7mm (7/9)

SHC23-9
Φ9mm (9/11)

SHC23-11
Φ11mm (11/14)

Shaver Cutter

Double Tooth Synovium Cutter

4.5 x130mm
Disposable



Meniscus Cutter

4.5 x130mm
Disposable



Bone Cutter

4.5 x130mm
Disposable



Matchhead Cutting

4.0mm
Disposable



Double Tooth Cutter

4.5 x130mm
Disposable



Teeth Synovium Cutter

4.5 x130mm
Disposable



Cutting Ball

4.0mm
Disposable



Accessories

Mobile Trolley HC3020

Mute Caster
Size:470*511*1000mm



Multifunctional Foot Switch



Dual Pedal Foot Switch



Single Pedal Foot Switch



Irrigation Pump



Sterilizing Container



